

# The Alabama Shakespeare Festival

## SchoolFest Activity Guide for



adapted from the novel by E.B. White  
by Joseph Robinette



Director  
Set Design  
Costume Design  
Lighting Design

Nancy Rominger  
Peter Hicks  
Jennifer Ables  
Curtis Hodge

Activity Guide written by

Kristi Jacobs  
kjacobs@asf.net

Contact ASF: 1/800/241-4273, [www.asf.net](http://www.asf.net)

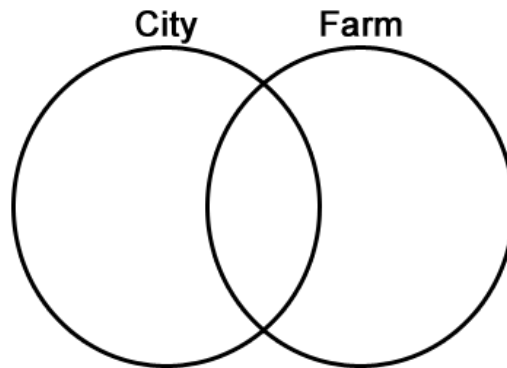


**ASF SchoolFest is sponsored by a major grant from ALFA Corporation**



## Pre-Performance Activities...

1. Read E.B. White's *Charlotte's Web* with your students.
2. Discuss the difference between live theatre and television/movies.
3. Create a spider web out of poster board and thread or on a bulletin board in your classroom. Each day put a new vocabulary word in the web. You can use words that Charlotte uses in the book, your current vocabulary words or have the students suggest words.
4. Create a Venn diagram on posterboard/chalkboard/dry-erase board or on a piece of paper that you can distribute to each student. Compare & contrast farm life and city life.



70"" Ykndwt" i qgu"vq"vjg"eqwpv{"hckt0""Fkuewuu"y jcv"mkpf"qh"vjkipiu."rgqrng"qt"cpkocnu"{qw" oki jv"Łpf"cv"c"eqwpv{" fair.

6. Use the characters names to create acrostic poems.

SAMPLE:      W onderful pig  
                   I s happy to make friends with Charlotte.  
                   L oves to eat and sleep.  
                   B rave  
                   U nderstanding and kind  
                   R uns around!

7. One of the major lessons of *Charlotte's Web* is how to handle death. Discuss the life cycle with your stu- fgpvu0""Vcnm"cdqww"fkhhgtgpv"nkhg"e{engu."hqt"gzco r ng"vjg"nkhg"e{engu"qh" f qy gtul rncpvu."urkfgtu."fqiu."kpugevu."tcvu." pigs, etc. Have students draw pictures of different life cycles.



## Post-Performance activities...

1. Discuss students' reactions to the play. Who were their favorite characters and why? Did they have a favorite part? What important lessons did they learn? Did the show meet their expectations? Have students draw a picture of their favorite character or scene.

2. Discuss the idea of friendship. There are several unlikely friendships in *Charlotte's Web*, a spider and a pig, sheep and goose, human and pig, etc. Ask students if they've ever been hesitant to befriend someone. Did they make friends with them anyway? How did the friendship turn out? Do they seem different now than when you

SAMPLE: F orgiving  
E asy to talk to  
R escues me  
N ever says mean things

3. Wilbur asks the question, "Who am I?" Throughout the course of the play, Wilbur discovers new things about himself and his friendship with Charlotte. In the end he decides that having true friendship is most important to him. What is important to you? Draw a picture of things that mean the most to you in your life. Older Students: Write a paragraph about the things that mean the most to you in your life.

4. Fern fought for Wilbur's life because she felt it was unjust to kill a pig just because it was small. What are some things that you have fought for in your life? Have you ever disagreed with something your parents told you? Would you stand up for something you believe in to your parents?

5. Templeton helped Charlotte choose words to write in her web. If you had to choose words to help save a

Charlotte, but she did it anyway to help her friend. Read the following dialogue from the end of *Charlotte's Web* to your students.

WILBUR: Oh, Charlotte. Why did you do all this for me? I've never done anything for you.

CHARLOTTE: You have been my friend. That in itself is a tremendous thing. After all, what's a life  
Heaven knows anyone's life can stand a little of that.

Ask the students if they have ever done something for someone without getting anything in return. How did it  
collect canned goods for a food bank, plant a garden for school, etc.



## Curriculum Connection

### Health/Physical Education

*Movement Exercise:* The farm animals in *Charlotte's Web* each have a distinctive way of moving. Have the students take on the different barnyard animal characteristics and move around the room. Students can add animal noises if you wish.

### Social Studies

*Cartography of Zuckermann's Farm:* Have students draw a map of the Zuckermann Farm – farmhouse, barn, e j k e m g p " e q q r . " e q y " r c u v w t g . " j q t u g " L g n f . " r k i " r g p . " u r k f g t " y g d . " t c v " j q n g " c p f " u j g g r " r c u v w t g 0

### Science

*Animal Study:* Have students research the different characters in the play. They should discuss the different animal characteristics and habits. Did the actors share similar traits with the animals they were portraying? What similarities did they see? Differences?

*Life Cycle Study:* Assign students different animals' and insects' life cycles to study. Have them create a poster with images displaying the various cycles of life they go through.

### Fine Arts

*Prize-Winning Pig:* Have students draw what they think a prize-winning pig would look like. They can draw the pig in its home or at the county fair.

*A Spider's Home:* Have students create their own spider web out of construction paper, straws and yarn. The students can create a spider out of pipe cleaners and pom poms or construction paper.

### Character Education

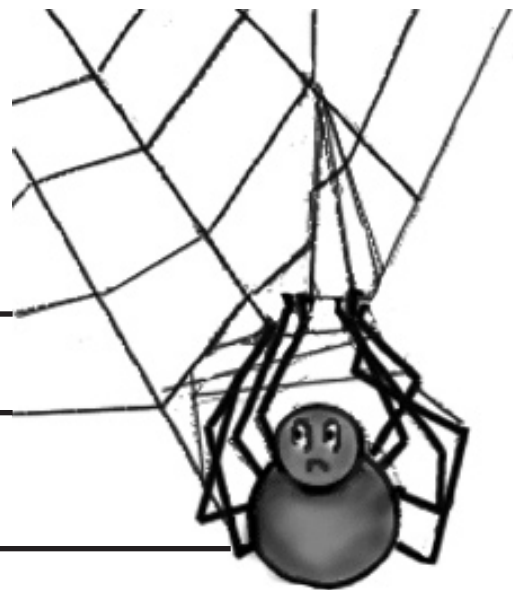
*Meeting new people:* Wilbur moved to the Zuckermann's barn and met many new animals. He had to make new friends. Have you ever been the "new kid on the block"? How does it feel to be new and not have many friends? How do you feel in new or uncomfortable situations? What do you do to make yourself more comfortable? When you meet someone new, do you make an effort to make them feel comfortable?

### Family and Consumer Science

*Responsibility:* Mr. Arable allowed Fern to keep Wilbur if she agreed to take care of him. Do you have pets you take care of? What kind of responsibility comes with having pets? Consider getting a class pet or plants that students take turns taking care of.

# Charlotte's Word Scramble

Help Charlotte & Wilbur decode the following words from the play. Write the unscrambled word in the blank space to the right of each word.



REFN \_\_\_\_\_

EESH \_\_\_\_\_

RABN \_\_\_\_\_

LETPONTME \_\_\_\_\_

MBHUEL \_\_\_\_\_

LBWIRU \_\_\_\_\_

NTYCUO AIRF \_\_\_\_\_

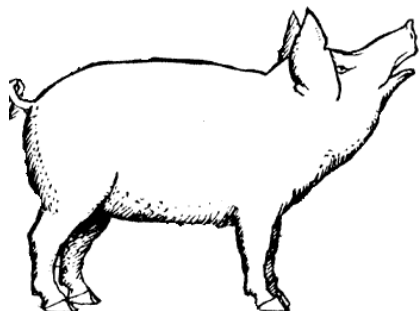
ACOBN \_\_\_\_\_

RABLEA \_\_\_\_\_

RERTIIFC \_\_\_\_\_

LOPSS \_\_\_\_\_

IGP \_\_\_\_\_



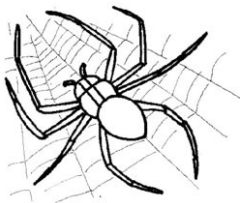
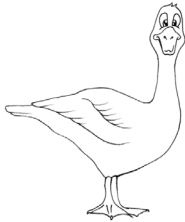
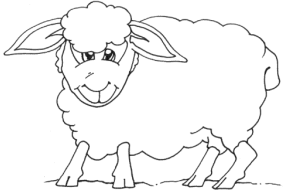
OSEOG \_\_\_\_\_

TADIRNA \_\_\_\_\_

OMSE IPG \_\_\_\_\_

# WHO SAID THAT?

Match the character with their line from Charlotte's Web.  
(Some characters may be used more than once.)



I feel peaceful now that I know you will live safe and secure.

It's not funny. He can talk, you know.

Won't be long until that pig is big enough to kill and eat.

They plan to keep you nice and comfortable and fatten you up with delicious slops.

So this is our new resident?

Terrific. My word, I do believe that was my word.

I'm going to enter this pig in the County Fair!

By helping you, perhaps I was lifting up my life a trifle.

Friendship is one of the most satisfying things in the world.

How, how, how about PIG SUPREME?

It's either freedom...or the frying pan.

Where's Papa going with that ax?

# Templeton's Trash Poetry

Use the words below to create your own poem.



---

---

---

---

---

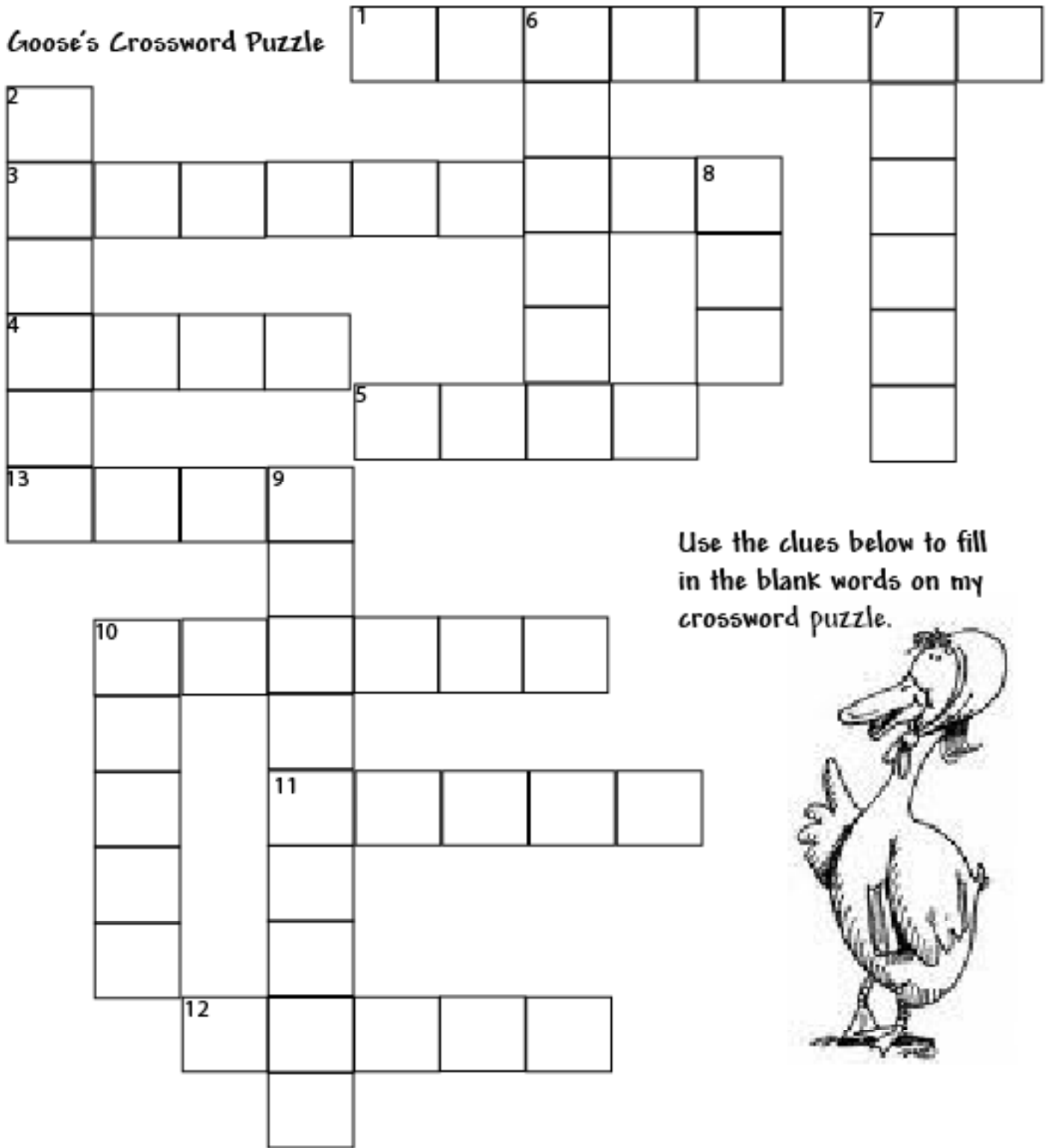
---

---

---



# Goose's Crossword Puzzle



Use the clues below to fill in the blank words on my crossword puzzle.



## ACROSS

- 1 Hatch from eggs
- 3 This is the most terrible case of \_\_\_\_\_
- 4 Wilbur's home
- 5 This person asked, "Where's papa going with that ax?"
- 10 Last word on web
- 11 Mr. Zuckermann's helper
- 12 Suggests the word terrible

## DOWN

- 2 Some Pig
- 6 Charlotte
- 7 Goose's Friend
- 8 Causes a stink when broken
- 9 Gets words from dump
- 10 Uncle

Connect the dots with like numbers to help Charlotte make her Web

